

Artificial Eye Measurement Performed on 03-Oct-2016

Artificial eye measurements in three trials. The duration of each trial is 10 seconds.

	Trial 1	Trial 2	Trial 3
Std_Hor(mv)	1.132	1.170	1.146
Std_Ver(mv)	1.319	1.306	1.323
Std_Hor(arcmin)	0.226	0.234	0.229
Std_Ver(arcmin)	0.264	0.261	0.265
rms_Hor(mv)	1.132	1.170	1.146
rms_Ver(mv)	1.319	1.306	1.323
rms_Hor(arcmin)	0.226	0.234	0.229
rms_Ver(arcmin)	0.264	0.261	0.265

Figure 1: Standard deviation in horizontal and vertical axis.

Important note: n

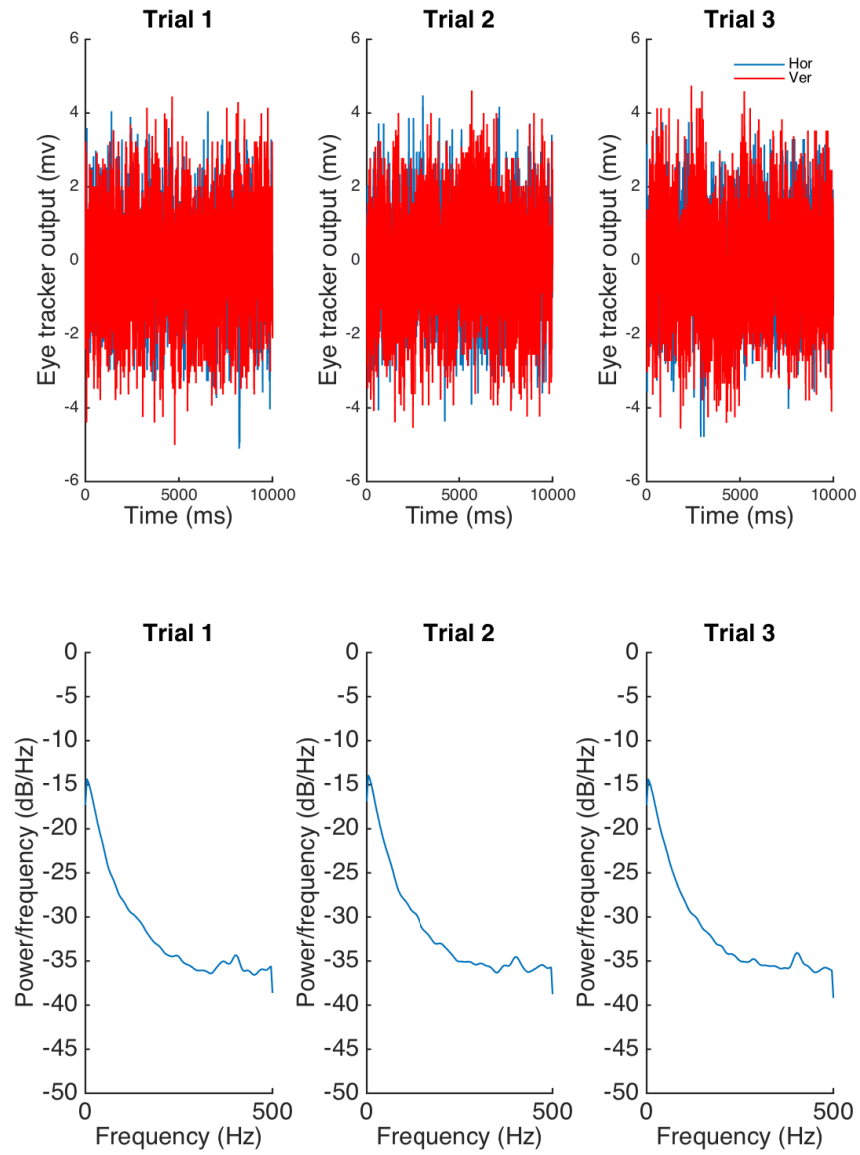


Figure 2: Top row represents the eye tracker output in horizontal and vertical axis for each trial. The bottom row are the PSD of the output calculated by Welch method. Each column refers to one trial.

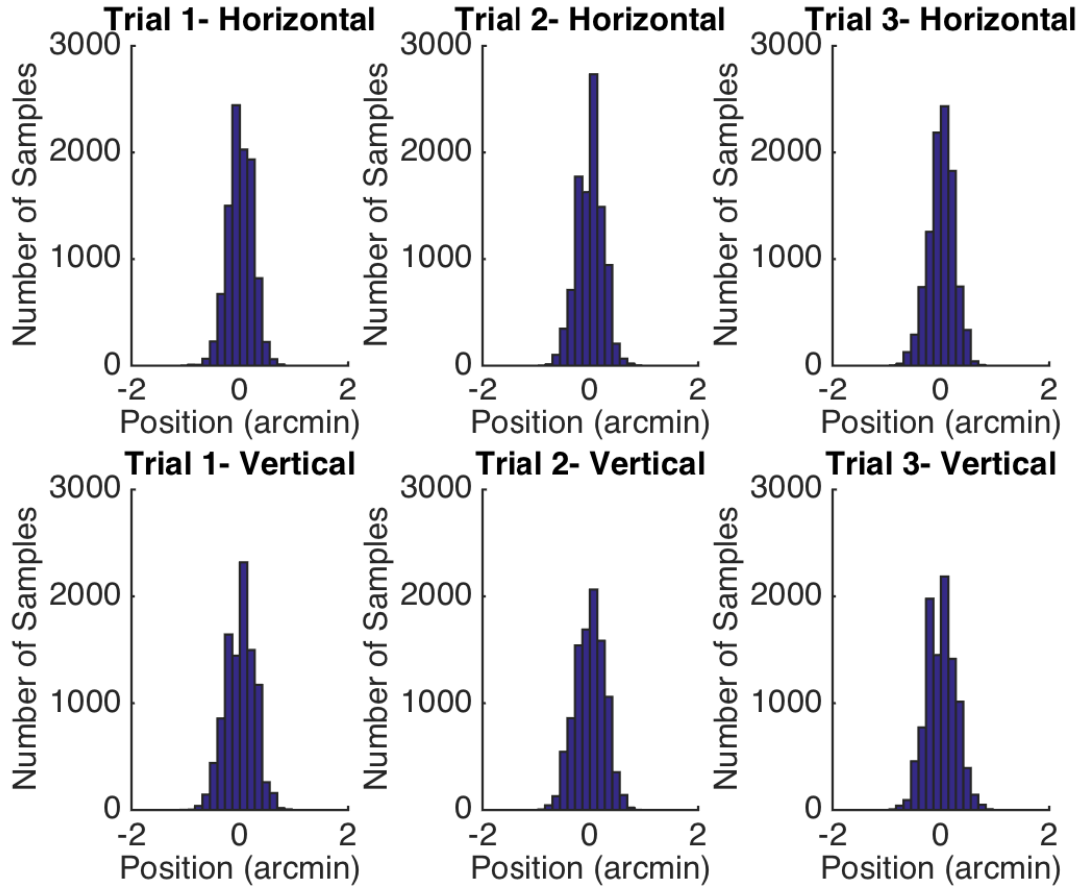


Figure 3: Distribution of the eye tracker output in horizontal (top) and vertical (bottom) axes. Each column refers to one trial.