

Artificial Eye Measurement Performed on 04-Jun-2014

Artificial eye measurements in three trials. The duration of each trial is 10 seconds.

	Trial 1	Trial 2	Trial 3
Std_Hor(mv)	1.463	1.475	1.476
Std_Ver(mv)	1.202	1.228	1.224

Figure 1: Standard deviation in horizontal and vertical axis.

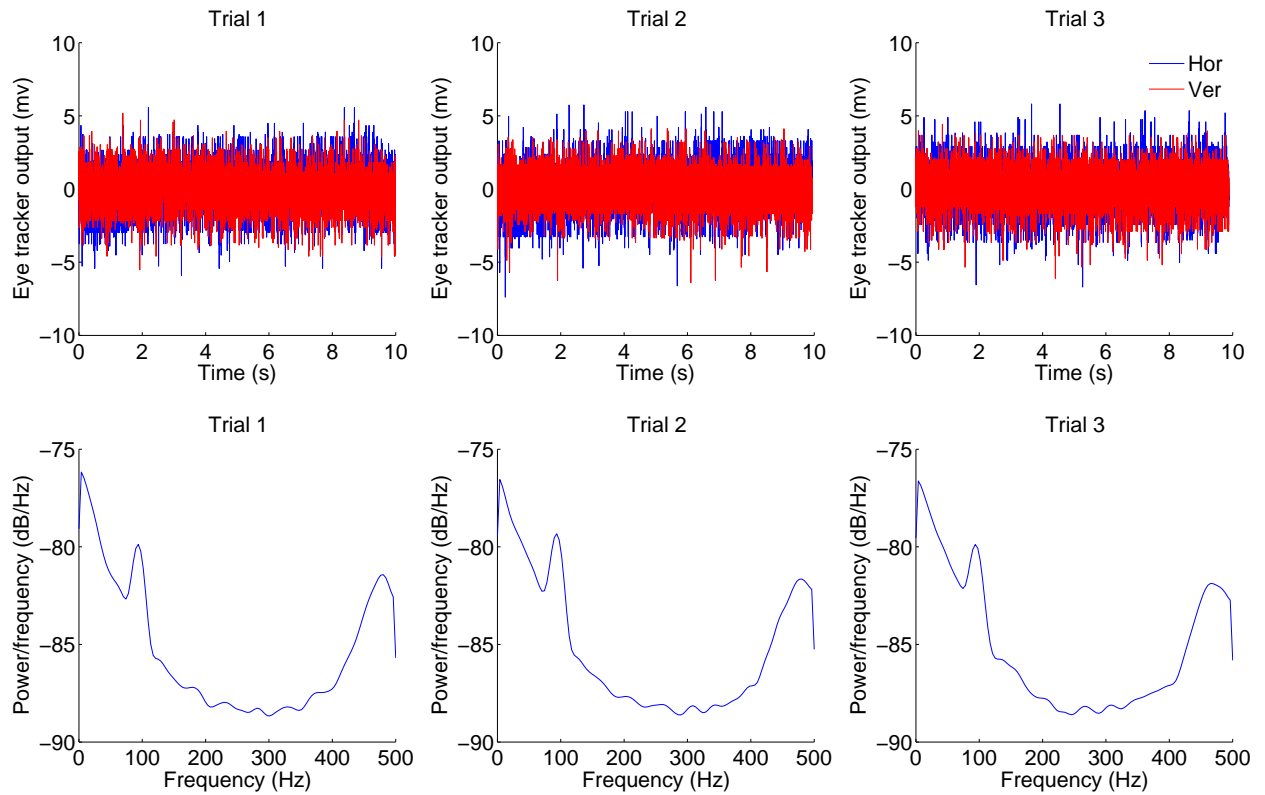


Figure 2: Top row represents the eye tracker output in horizontal and vertical axis for each trial. the bottom row are the PSD of the output calculated by Welch method. Each column refers to one trial.

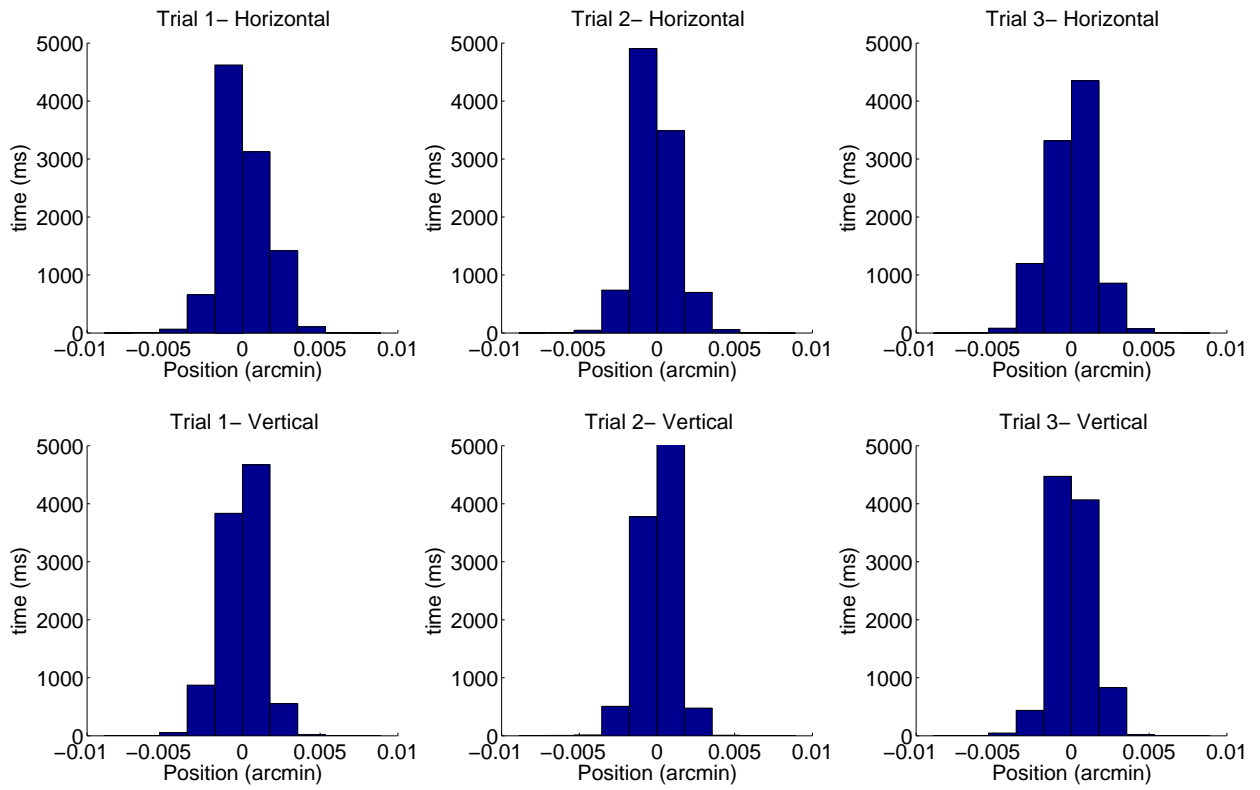


Figure 3: Distribution of the eye tracker output in horizontal (top) and vertical (bottom) axes. Each column refers to one trial.