

Artificial Eye Measurement Performed on 24-Apr-2019

Artificial eye measurements in three trials. The duration of each trial is 10 seconds.

	TRIAL 1	TRIAL 2	TRIAL 3	TRIAL 4	TRIAL 5	TRIAL 6	TRIAL 7	TRIAL 8	TRIAL 9	TRIAL 10
std_dev_x	0.670	1.064	0.943	1.787	0.781	0.863	2.019	1.227	1.172	
std_dev_y	1.627	1.559	1.604	2.506	1.676	1.440	2.370	1.414	1.415	
std_dev_x_min	0.134	0.213	0.169	0.357	0.166	0.173	0.404	0.245	0.234	
std_dev_x_max	0.325	0.312	0.321	0.517	0.335	0.288	0.474	0.283	0.283	
std_dev_y_min	0.770	1.547	0.962	3.163	1.051	0.863	3.495	1.406	1.476	
std_dev_y_max	2.006	2.313	1.765	3.167	1.912	1.962	4.890	2.312	1.425	
std_dev_x_min	0.154	0.309	0.196	0.633	0.210	0.173	0.699	0.281	0.295	
std_dev_x_max	0.402	0.423	0.351	0.633	0.382	0.316	0.936	0.462	0.285	

Figure 1: Standard deviation in horizontal and vertical axis.

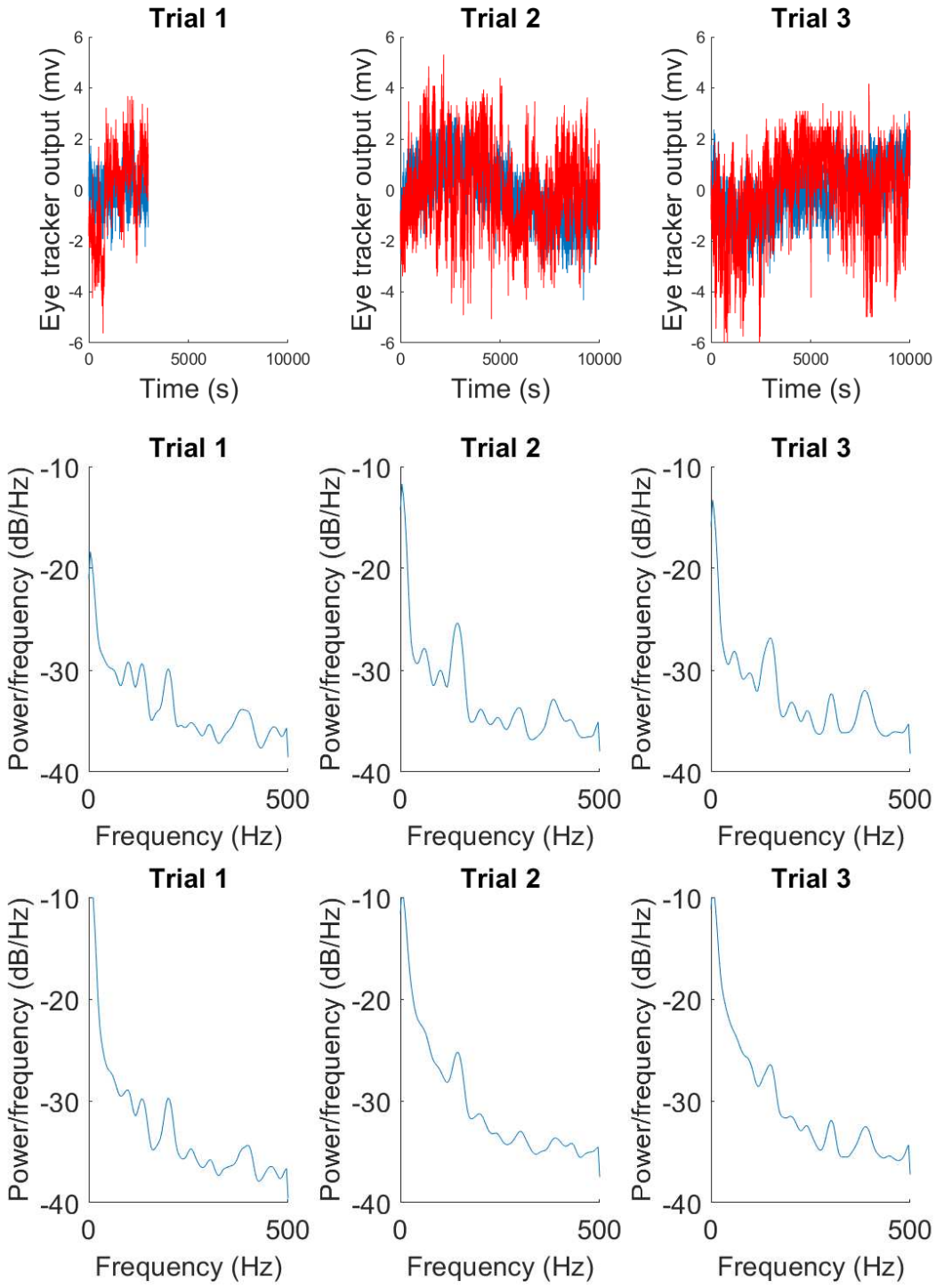


Figure 2: Eye tracker output (mv) vs time (s) and power/frequency (dB/Hz) vs frequency (Hz) for three trials.

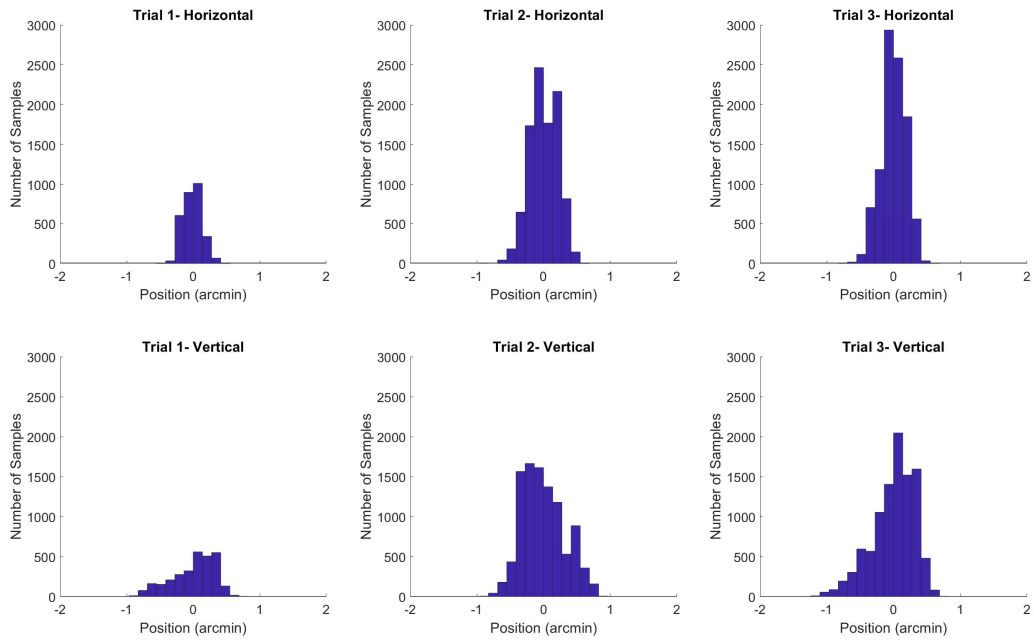


Figure 3: Distribution of the eye tracker output in horizontal (top) and vertical (bottom) axes. Each column refers to one trial.