

Artificial Eye Measurement Performed on 13-Feb-2017

Artificial eye measurements in three trials. The duration of each trial is 10 seconds.

| | Trial 1 | Trial 2 | Trial 3 |
|-----------------|---------|---------|---------|
| Std_Hor(mv) | 0.828 | 0.797 | 0.812 |
| Std_Ver(mv) | 1.066 | 1.126 | 1.139 |
| Std_Hor(arcmin) | 0.166 | 0.159 | 0.162 |
| Std_Ver(arcmin) | 0.213 | 0.225 | 0.228 |
| rms_Hor(mv) | 0.828 | 0.797 | 0.812 |
| rms_Ver(mv) | 1.066 | 1.126 | 1.139 |
| rms_Hor(arcmin) | 0.166 | 0.159 | 0.162 |
| rms_Ver(arcmin) | 0.213 | 0.225 | 0.228 |

Figure 1: Standard deviation in horizontal and vertical axis.

Important note: n

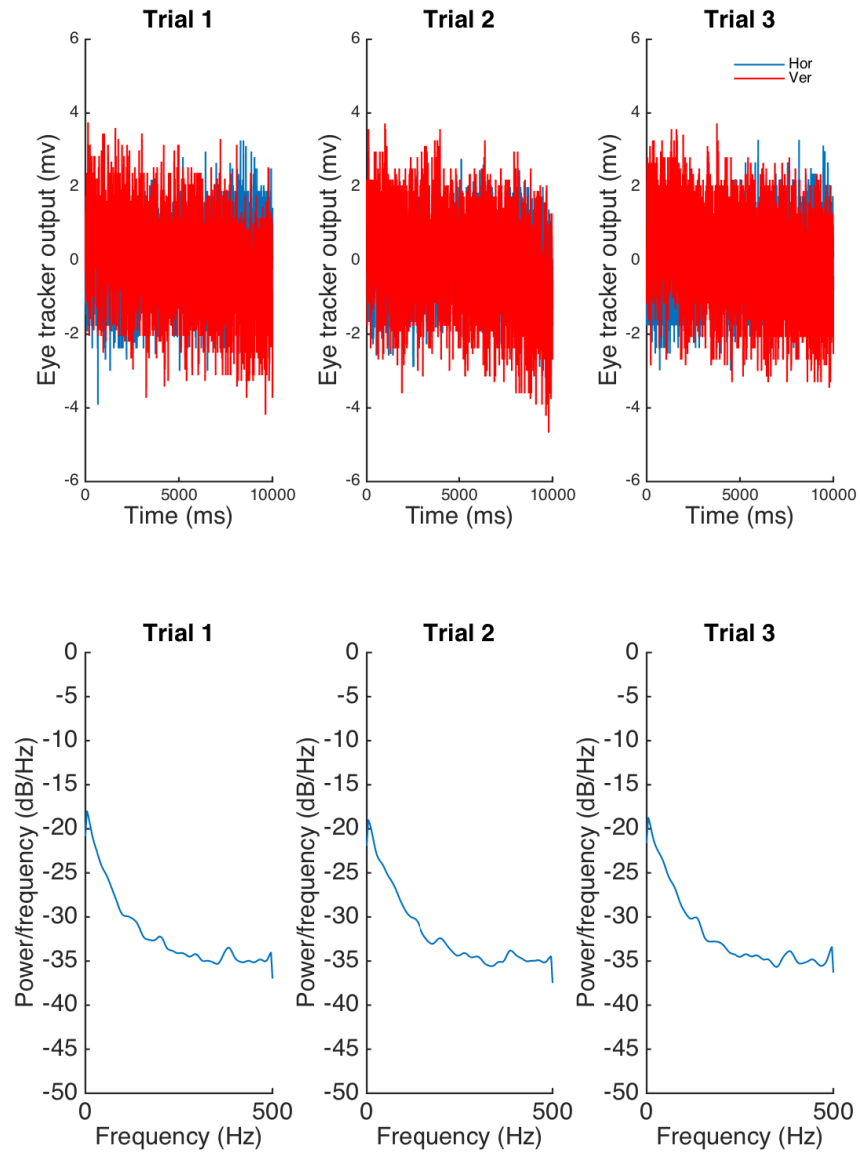


Figure 2: Top row represents the eye tracker output in horizontal and vertical axis for each trial. The bottom row are the PSD of the output calculated by Welch method. Each column refers to one trial.

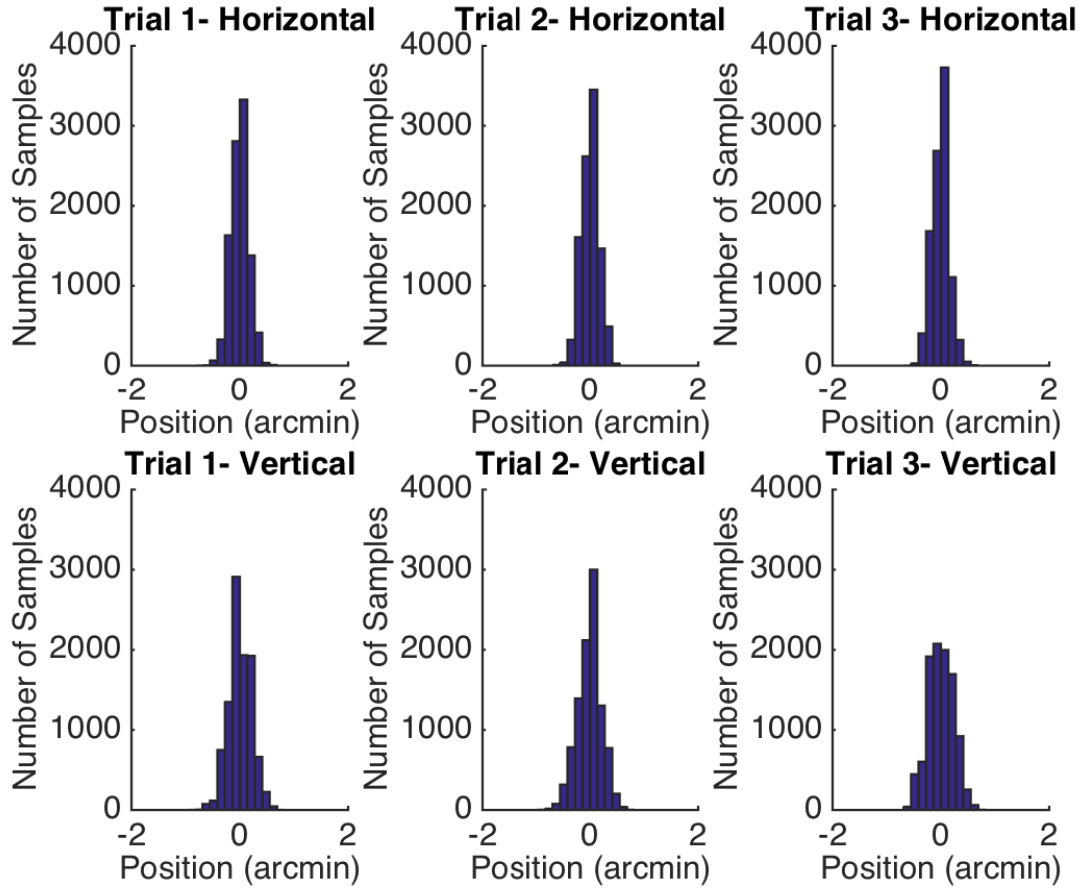


Figure 3: Distribution of the eye tracker output in horizontal (top) and vertical (bottom) axes. Each column refers to one trial.