

Artificial Eye Measurement Performed on 17-Jul-2014

Artificial eye measurements in three trials. The duration of each trial is 10 seconds.

	Trial 1	Trial 2	Trial 3
Std_Hor(mv)	1.658	1.504	1.581
Std_Ver(mv)	1.115	1.111	1.147

Figure 1: Standard deviation in horizontal and vertical axis.

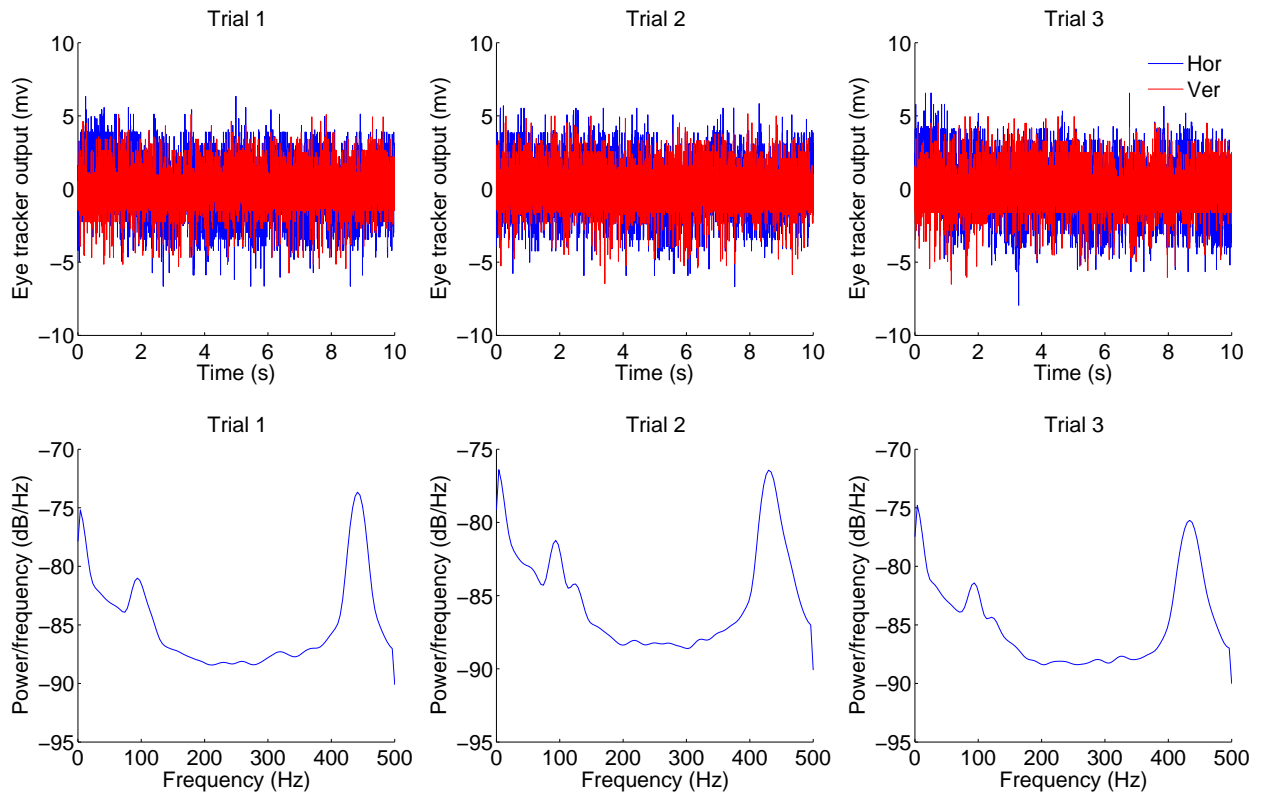


Figure 2: Top row represents the eye tracker output in horizontal and vertical axis for each trial. the bottom row are the PSD of the output calculated by Welch method. Each column refers to one trial.

Important note: This recording was done on the day of Warren's visit in the afternoon for final check.

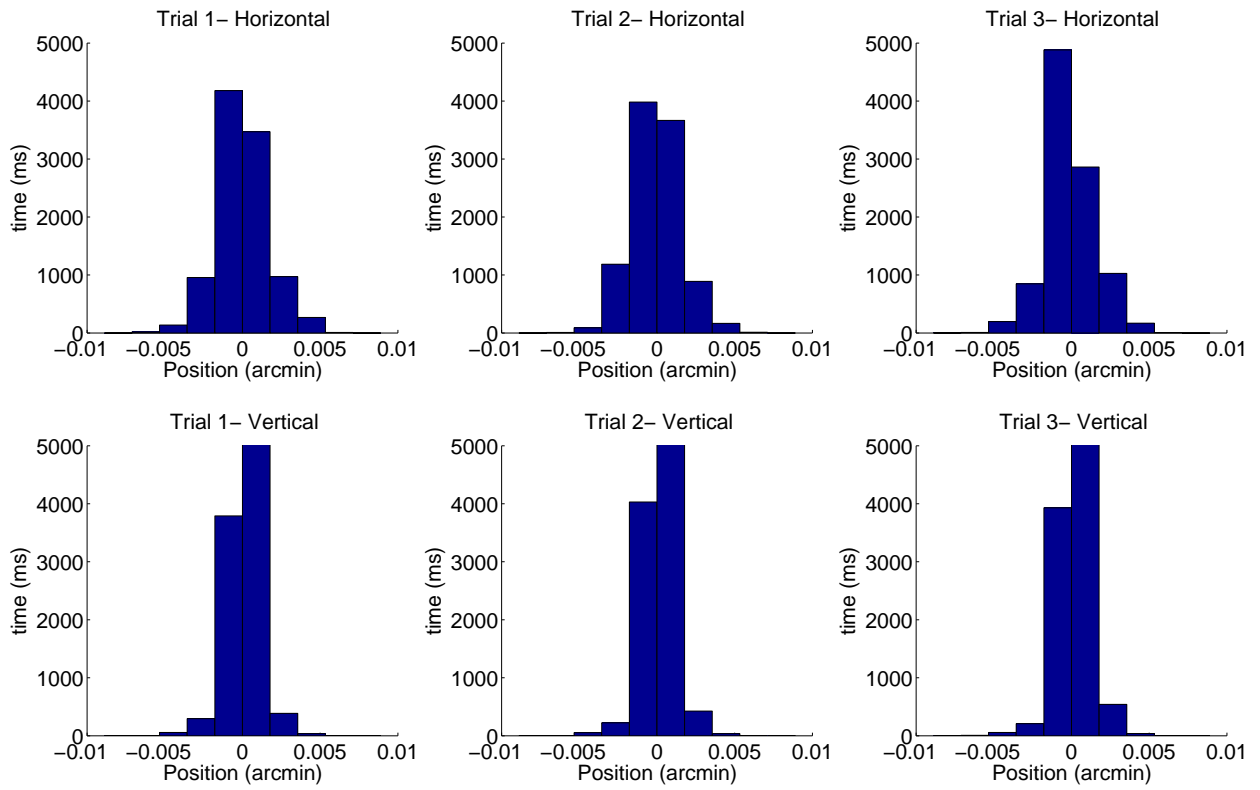


Figure 3: Distribution of the eye tracker output in horizontal (top) and vertical (bottom) axes. Each column refers to one trial.