

Artificial Eye Measurement Performed on 10-Sep-2020

September 11, 2020

Contents

- 1 Left DPI - Static 1
 - 2 Left DPI - Dynamics 3
- Artificial eye measurements in three trials. The duration of each trial is 10 seconds.

1 Left DPI - Static

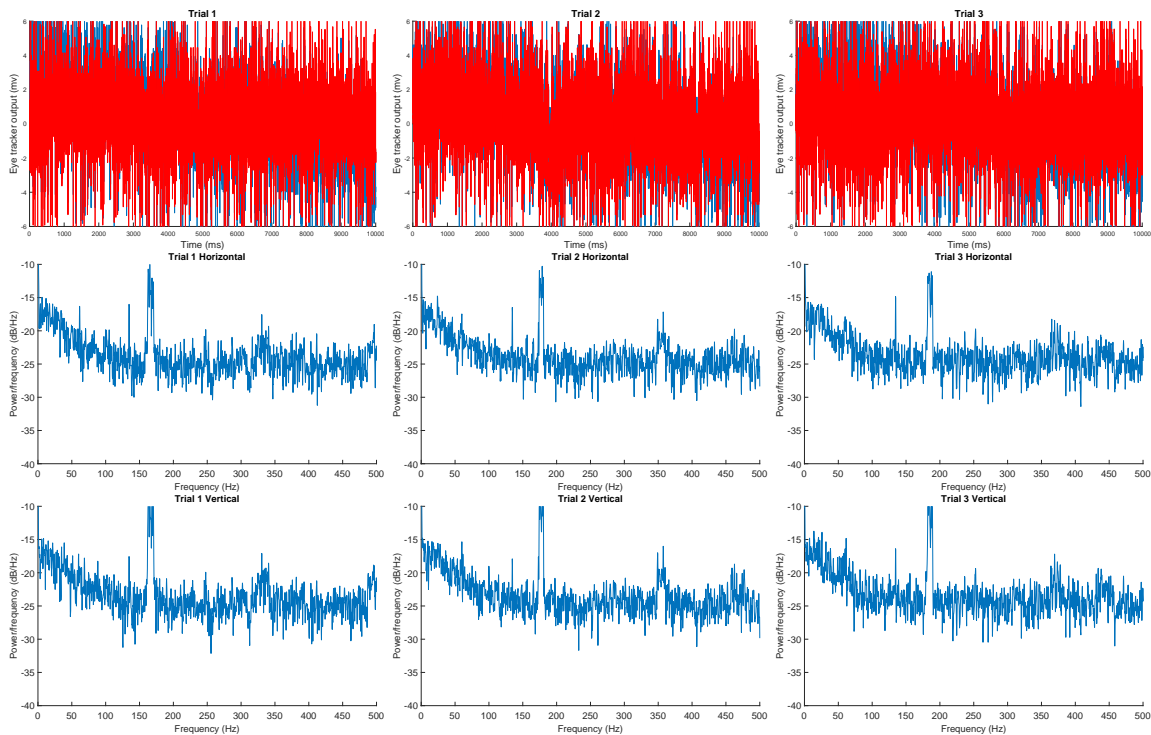


Figure 1: Top row: x and y traces. Middle row: power spectra of horizontal traces. Bottom row: power spectra of vertical traces

Trial #	standard deviation				root mean square			
	millivolts		arcmin		millivolts		arcmin	
	X	Y	X	Y	X	Y	X	Y
1	2.259	1.855	0.274	0.225	3.396	2.005	0.412	0.243
2	2.078	1.933	0.252	0.234	2.744	2.110	0.333	0.256
3	2.137	1.887	0.259	0.229	2.810	1.905	0.341	0.231

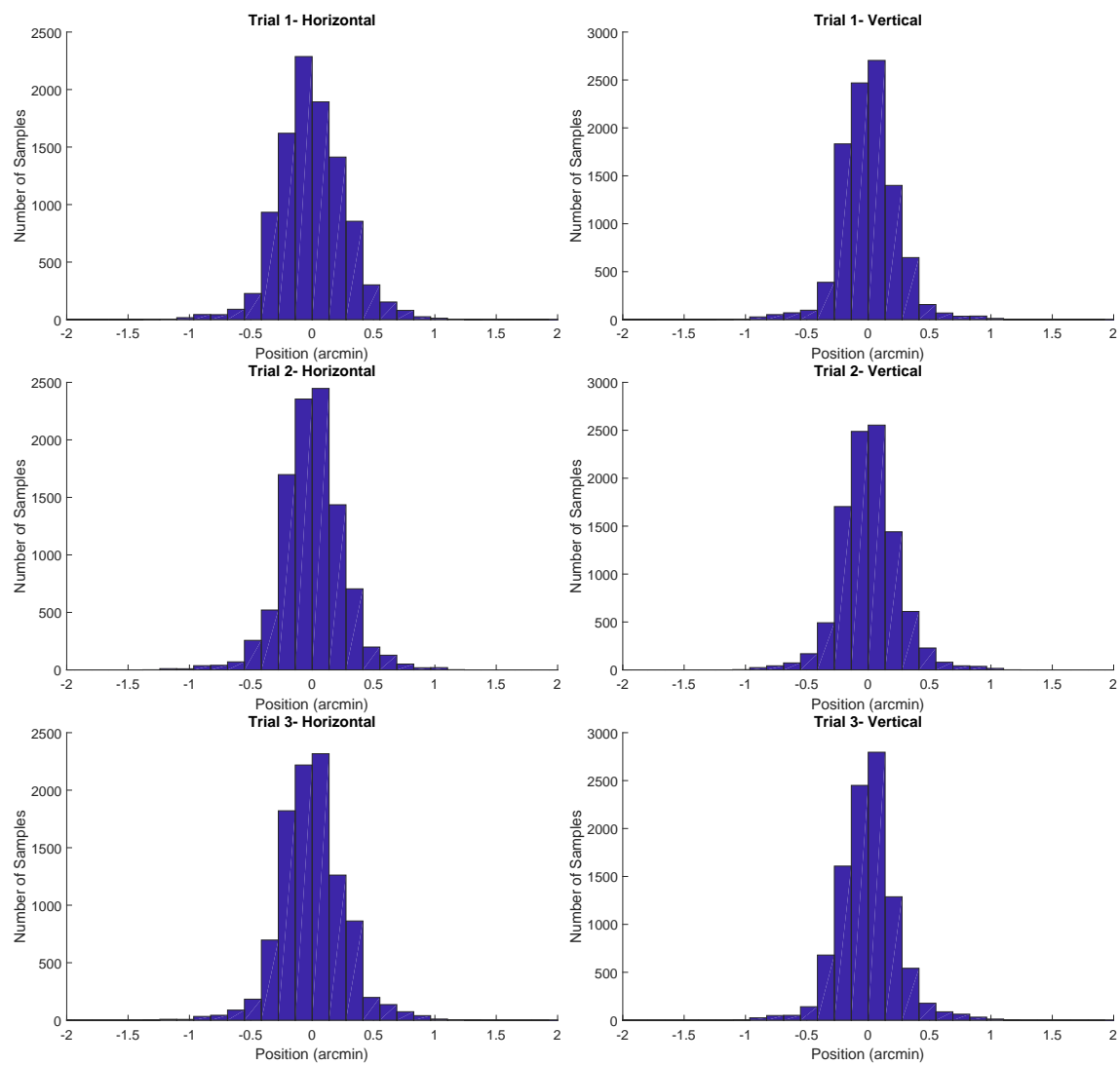


Figure 2: Histograms of horizontal and vertical positions (arcmin).

2 Left DPI - Dynamics

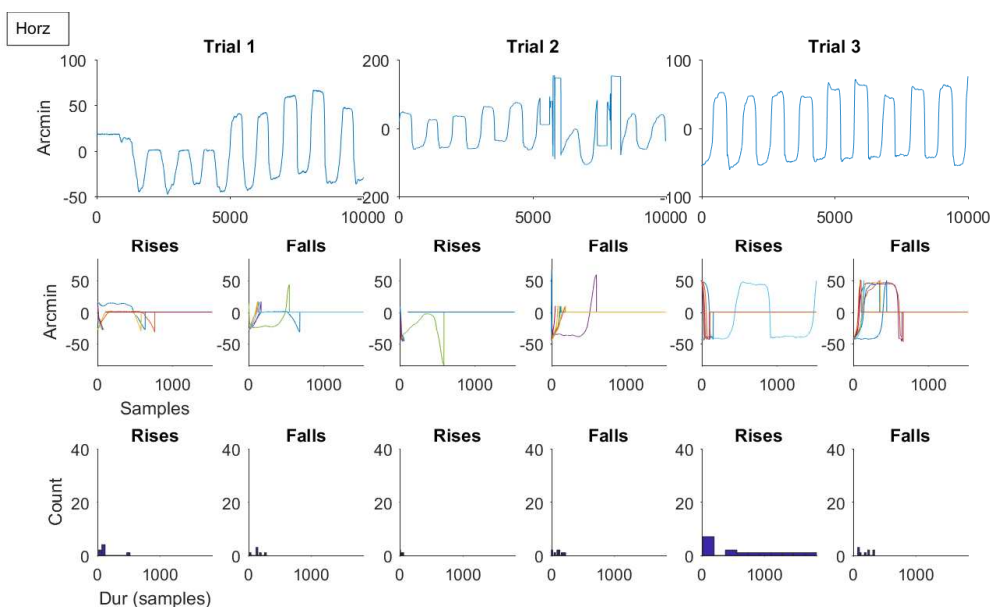


Figure 3: Top row: Horz traces. Middle row: Example rises and falls from each trial. Bottom row: Histogram of rise and fall times in each trial.

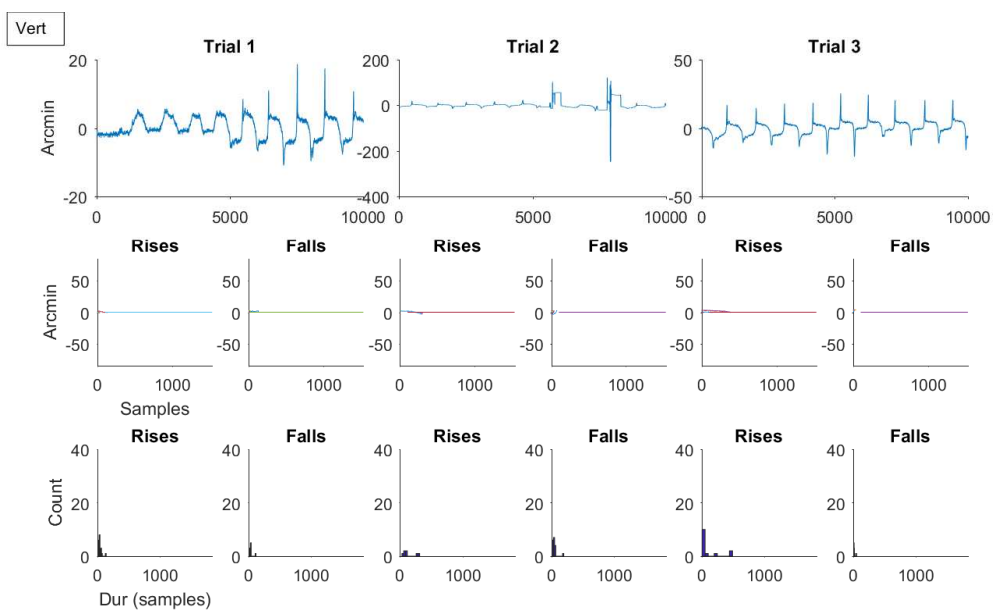


Figure 4: Top row: Vert traces. Middle row: Example rises and falls from each trial. Bottom row: Histogram of rise and fall times in each trial.

Horizontal						
Trial #	Rise			Fall		
	time (ms) Mean \pm STD	amplitude		time (ms) Mean \pm STD	amplitude	
		mv	arcmin		mv	arcmin
1	137.885 \pm 170.304	-222.794	-27.005	142.997 \pm 87.901	227.925	27.627
2	32.535 \pm 20.634	-409.162	-49.595	109.955 \pm 76.436	450.584	54.616
3	622.587 \pm 623.571	-356.816	-43.250	191.468 \pm 107.203	402.030	48.731

Vertical						
Trial #	Rise			Fall		
	time (ms) Mean \pm STD	amplitude		time (ms) Mean \pm STD	amplitude	
		mv	arcmin		mv	arcmin
1	39.459 \pm 27.982	-20.938	-2.538	30.950 \pm 28.198	24.736	2.998
2	137.128 \pm 112.208	-61.298	-7.430	50.352 \pm 39.451	95.770	11.608
3	115.156 \pm 168.683	-31.360	-3.801	21.017 \pm 13.422	30.434	3.689

Table 2: Rise and fall times (mean \pm STD) in horizontal and vertical traces across trials. Amp = amplitude of rise and fall in arcmin and millivolts. MAC: Please confirm?