

Artificial Eye Measurement Performed on 22-Apr-2015

Artificial eye measurements in three trials. The duration of each trial is 10 seconds.

Table 1: Standard deviation in horizontal and vertical axis.

	Trial 1	Trial 2	Trial 3
Std_Hor(mv)	1.450	1.379	1.373
Std_Ver(mv)	1.363	1.377	1.399

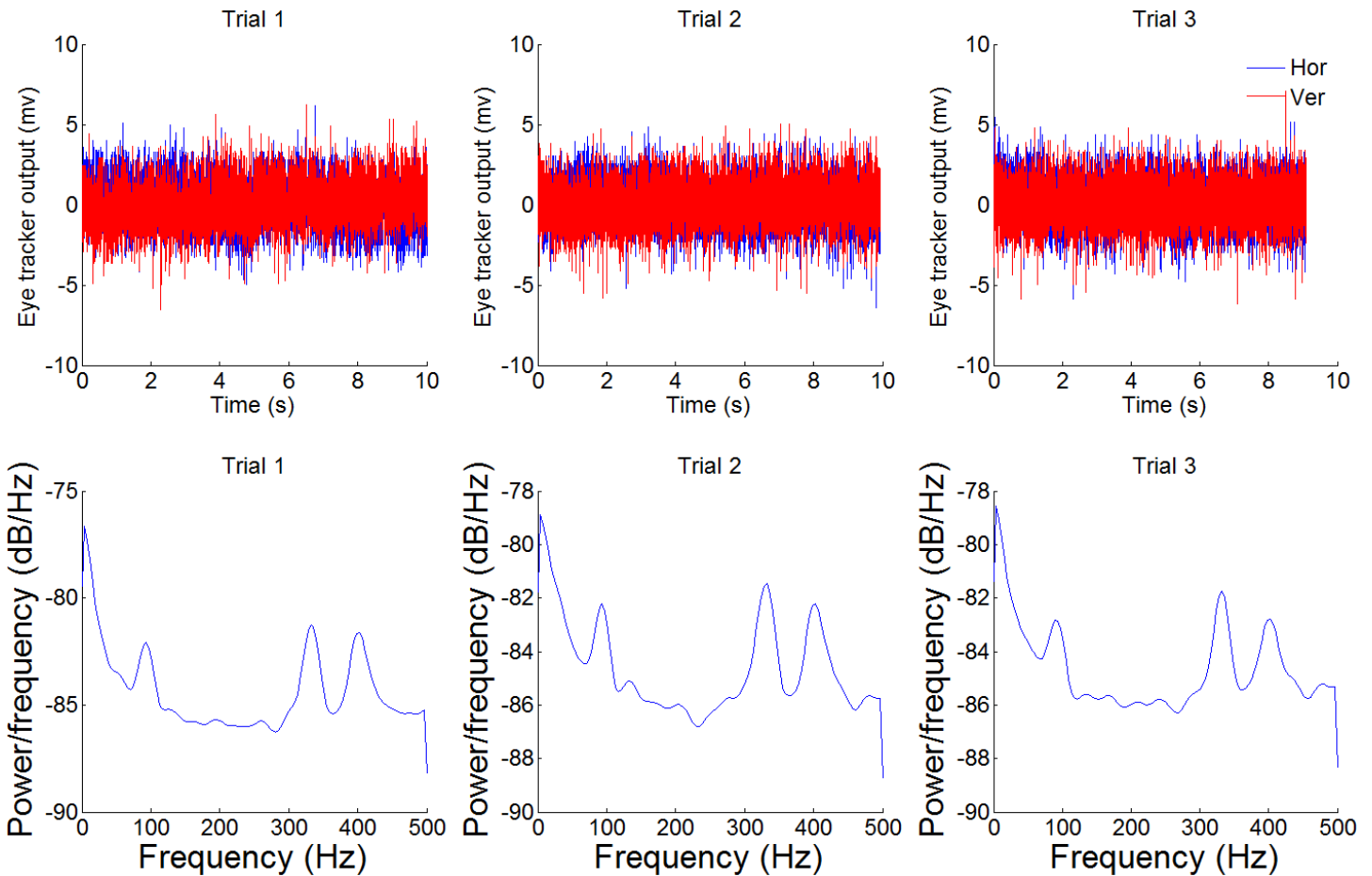


Figure 2: Top row represents the eye tracker output in horizontal and vertical axis for each trial. The bottom row are the PSD of the output calculated by Welch method. Each column refers to one trial.

Important note: This measurement was done on the day of Warren's visit. He fixed the problem with the 4th motor and this is the final recording of the day after all the fixes and changes.

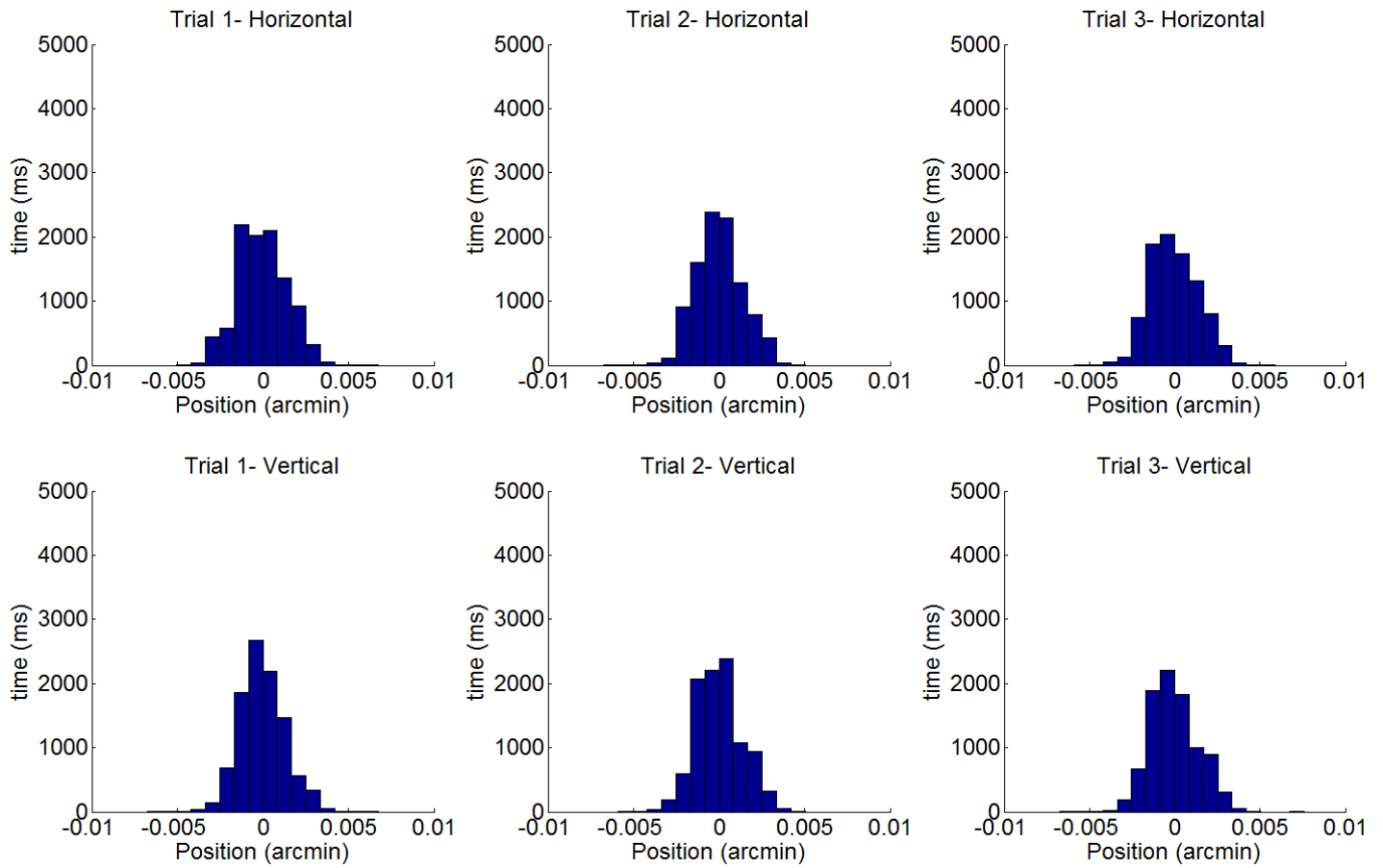


Figure 3: Distribution of the eye tracker output in horizontal (top) and vertical (bottom) axes. Each column refers to one trial.