

## Artificial Eye Measurement Performed on 22-Aug-2016

Artificial eye measurements in three trials. The duration of each trial is 10 seconds.

	Trial 1	Trial 2	Trial 3
Std_Hor(mv)	1.635	1.589	1.624
Std_Ver(mv)	1.081	1.085	1.090
Std_Hor(arcmin)	0.327	0.318	0.325
Std_Ver(arcmin)	0.216	0.217	0.218
rms_Hor(mv)	1.634	1.589	1.624
rms_Ver(mv)	1.081	1.085	1.090
rms_Hor(arcmin)	0.327	0.318	0.325
rms_Ver(arcmin)	0.216	0.217	0.218

Figure 1: Standard deviation in horizontal and vertical axis.

Important note: n

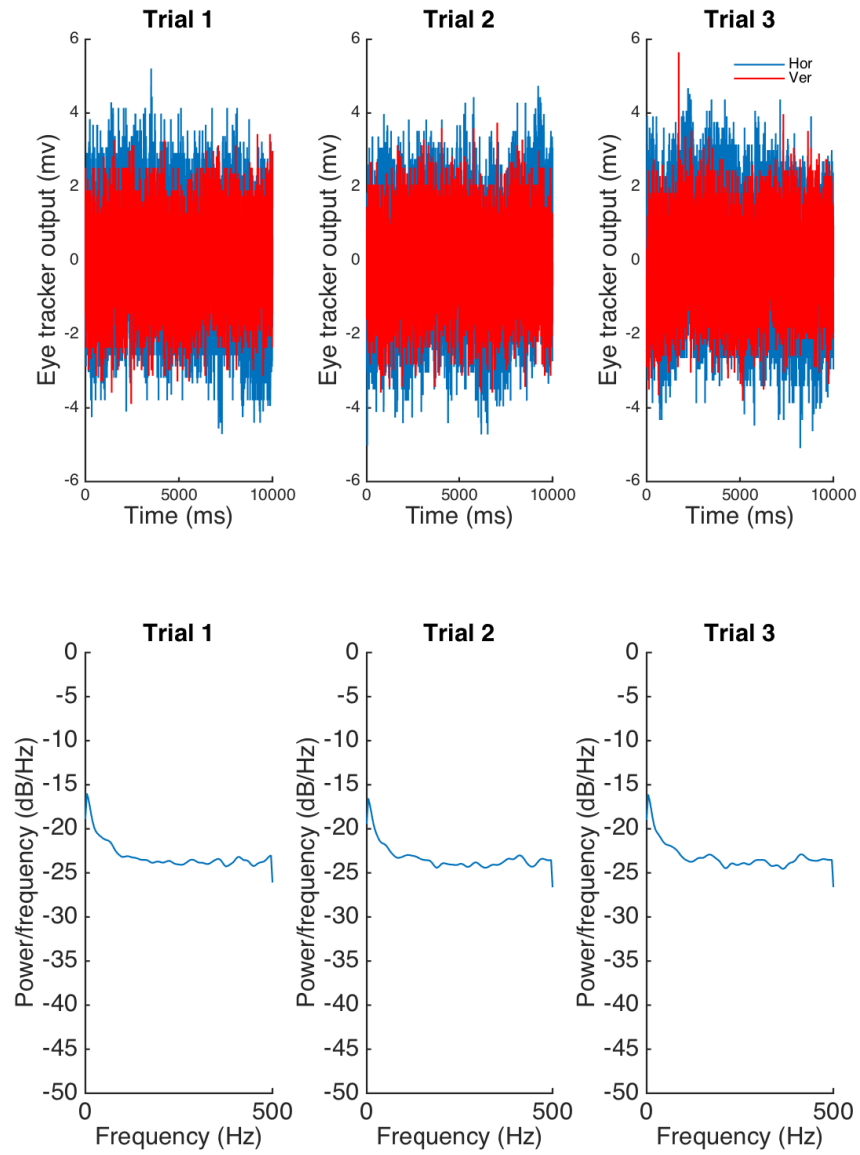


Figure 2: Top row represents the eye tracker output in horizontal and vertical axis for each trial. The bottom row are the PSD of the output calculated by Welch method. Each column refers to one trial.

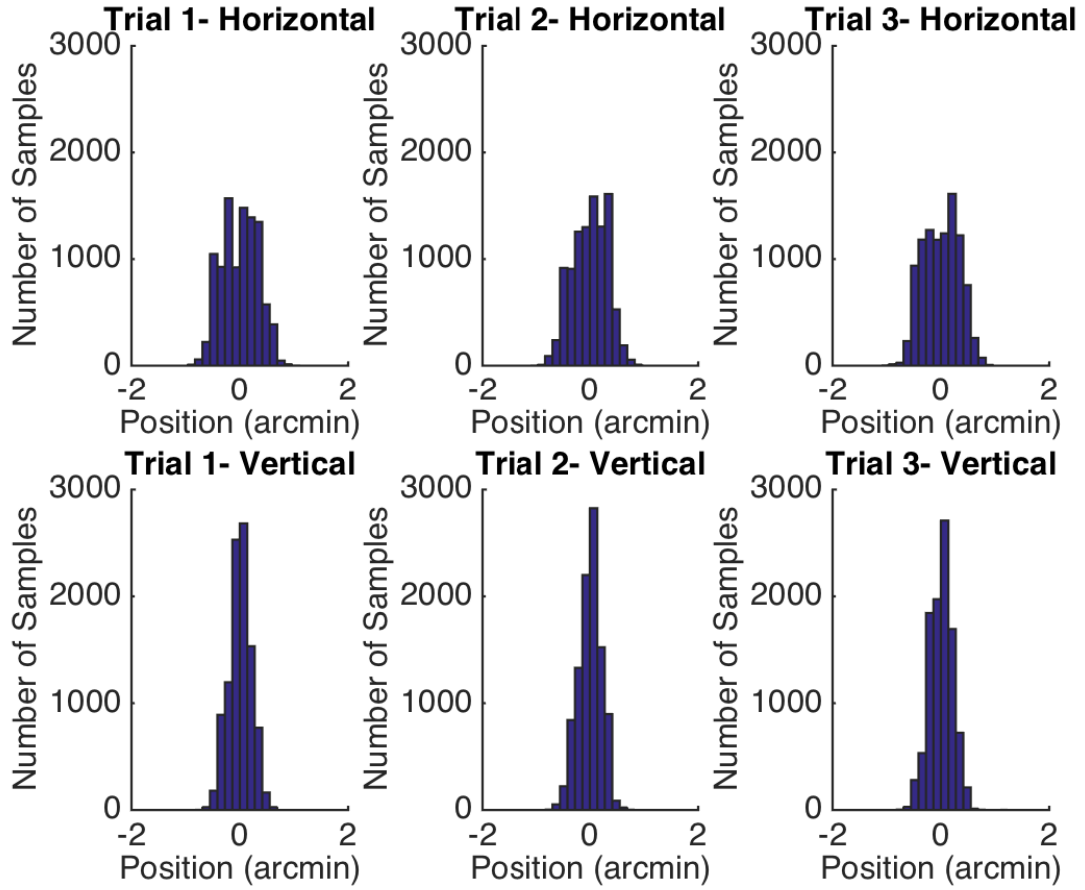


Figure 3: Distribution of the eye tracker output in horizontal (top) and vertical (bottom) axes. Each column refers to one trial.