

## Artificial Eye Measurement Performed on 24-Apr-2014

Artificial eye measurements in three trials. The duration of each trial is 10 seconds.

	Trial 1	Trial 2	Trial 3
Mean_Hor	0.01594	0.01548	0.01452
Mean_Ver	0.15240	0.15274	0.15284
Std_Hor	0.00197	0.00160	0.00164
Std_Ver	0.00184	0.00185	0.00184

Figure 1: Mean and standard deviation in horizontal and vertical axis.

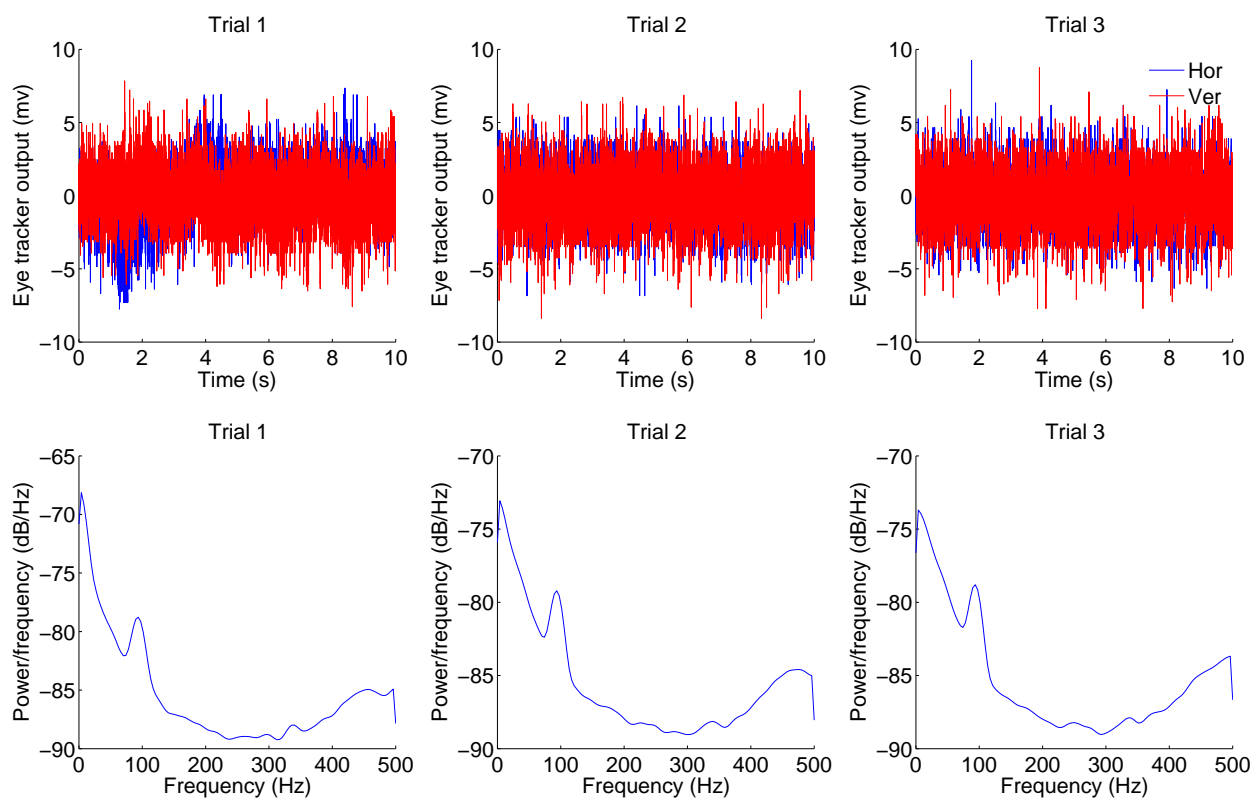


Figure 2: Top row represents the eye tracker output in horizontal and vertical axis for each trial. the bottom row are the PSD of the output calculated by Welch method. Each column refers to one trial.

Important note: This measurement is done with the fan off to check for the possible source of the 100 Hz noise. Apparently turning the fan off did not remove the noise. Should check for other possible sources.