

## Artificial Eye Measurement Performed on 25-Oct-2018

Artificial eye measurements in three trials. The duration of each trial is 10 seconds.

	Trial 1	Trial 2	Trial 3	
Std_Hor(mv)	2.515	2.474	2.353	2
Std_Ver(mv)	3.174	3.146	3.529	3
Std_Hor(arcmin)	0.503	0.495	0.471	0
Std_Ver(arcmin)	0.635	0.629	0.706	0
rms_Hor(mv)	3.684	2.491	3.092	2
rms_Ver(mv)	4.407	3.596	3.546	5
rms_Hor(arcmin)	0.737	0.498	0.618	0
rms_Ver(arcmin)	0.881	0.719	0.709	1

Figure 1: Standard deviation in horizontal and vertical axis.

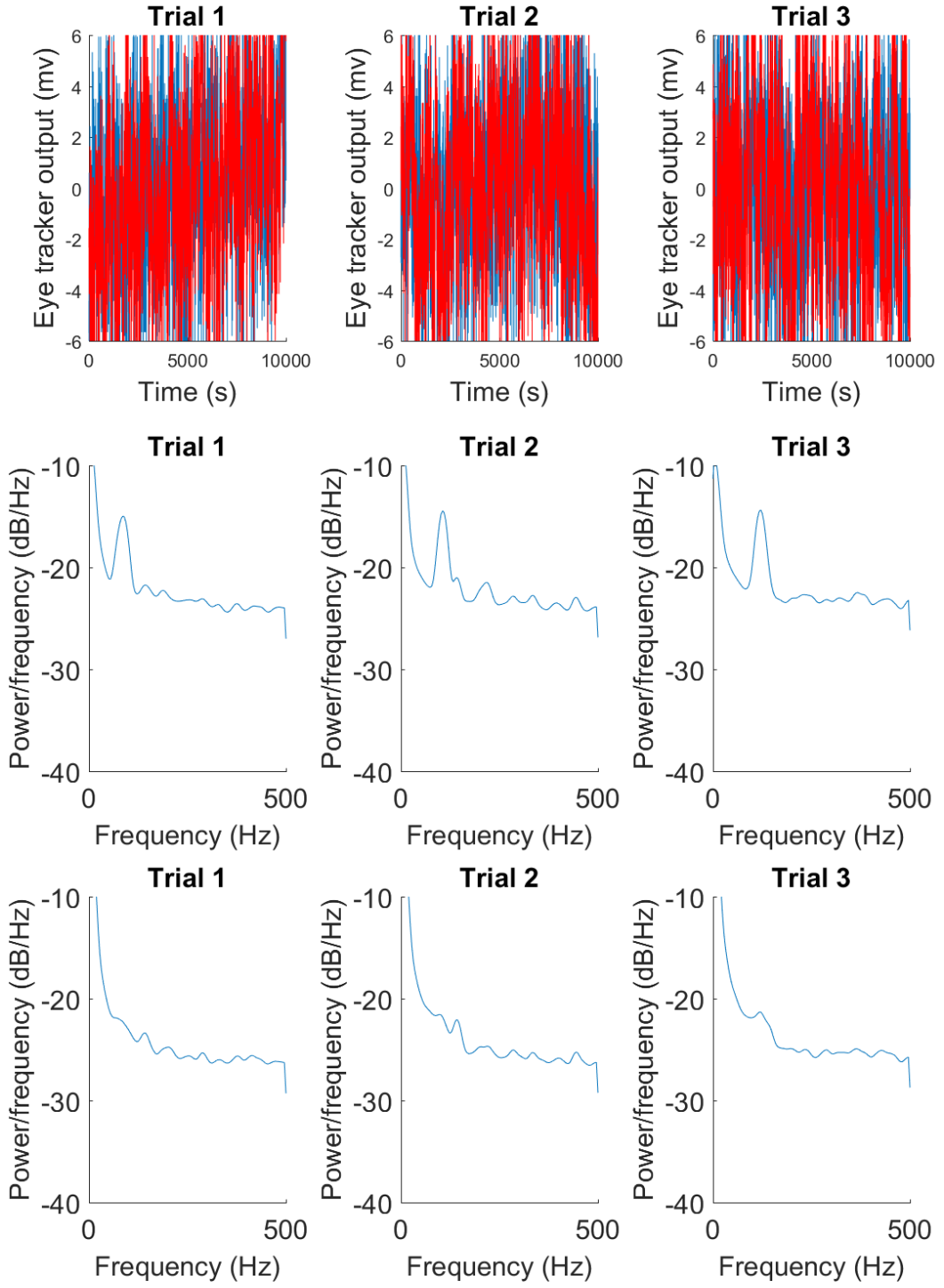


Figure 2: Eye tracker output and power/frequency for three trials. The top row shows the eye tracker output (mv) vs time (s) for Trial 1, Trial 2, and Trial 3. The middle and bottom rows show the power/frequency (dB/Hz) vs frequency (Hz) for each trial.

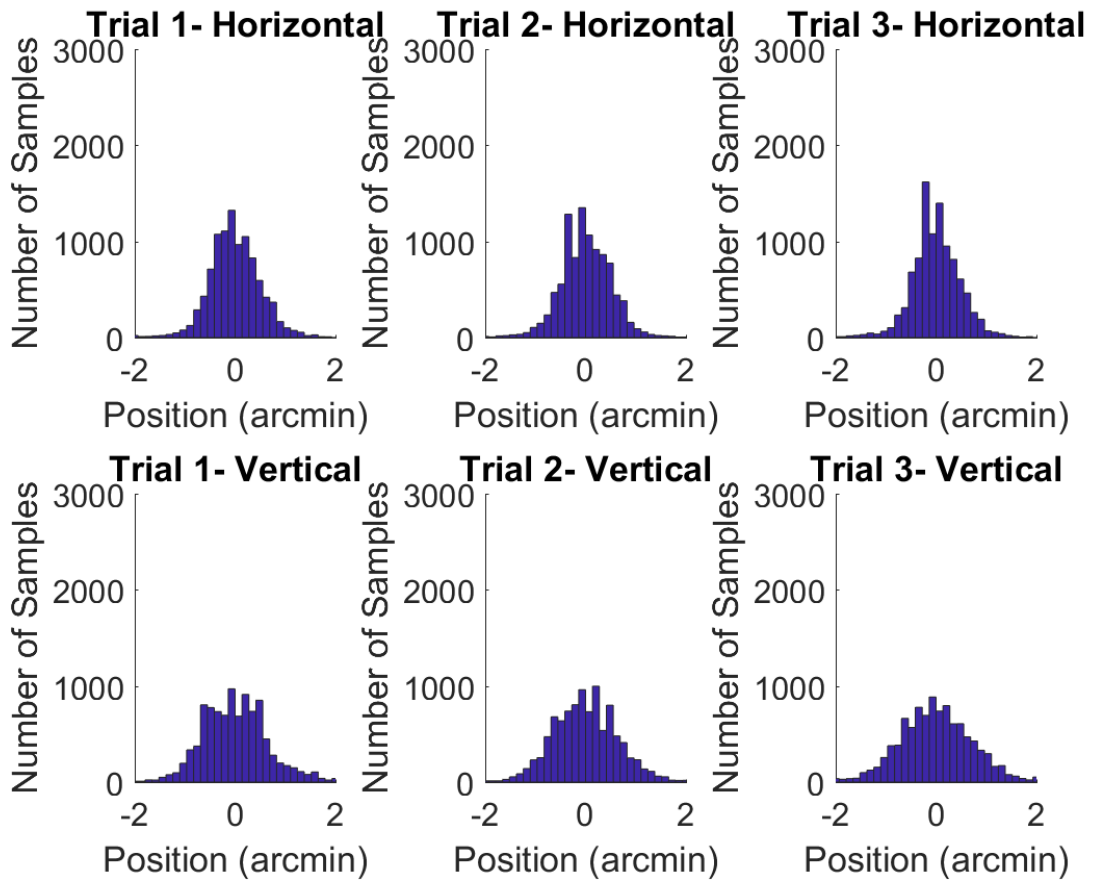


Figure 3: Distribution of the eye tracker output in horizontal (top) and vertical (bottom) axes. Each column refers to one trial.