

Artificial Eye Measurement Performed on 26-Sep-2014

Artificial eye measurements in three trials. The duration of each trial is 10 seconds.

	Trial 1	Trial 2	Trial 3
Std_Hor(mv)	1.552	1.581	1.536
Std_Ver(mv)	1.348	1.407	1.394

Figure 1: Standard deviation in horizontal and vertical axis.

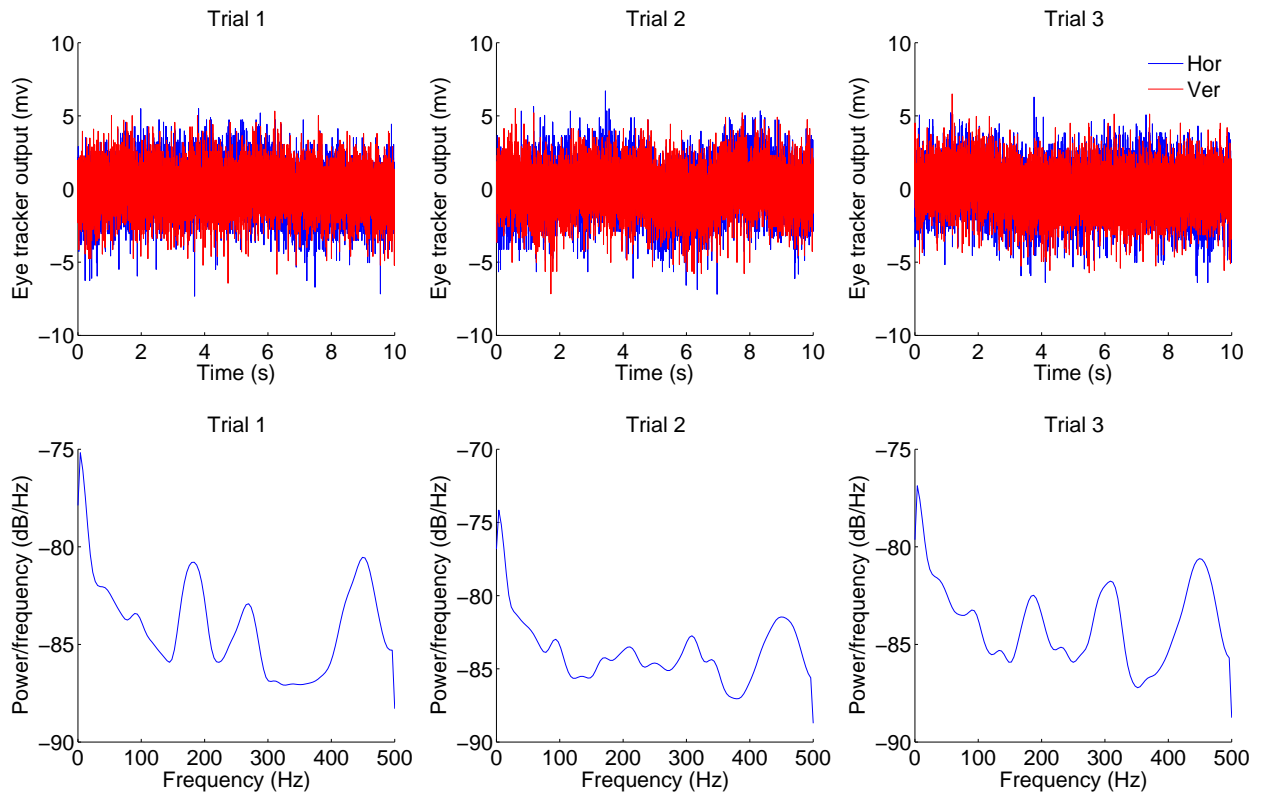


Figure 2: Top row represents the eye tracker output in horizontal and vertical axis for each trial. the bottom row are the PSD of the output calculated by Welch method. Each column refers to one trial.

Important note:

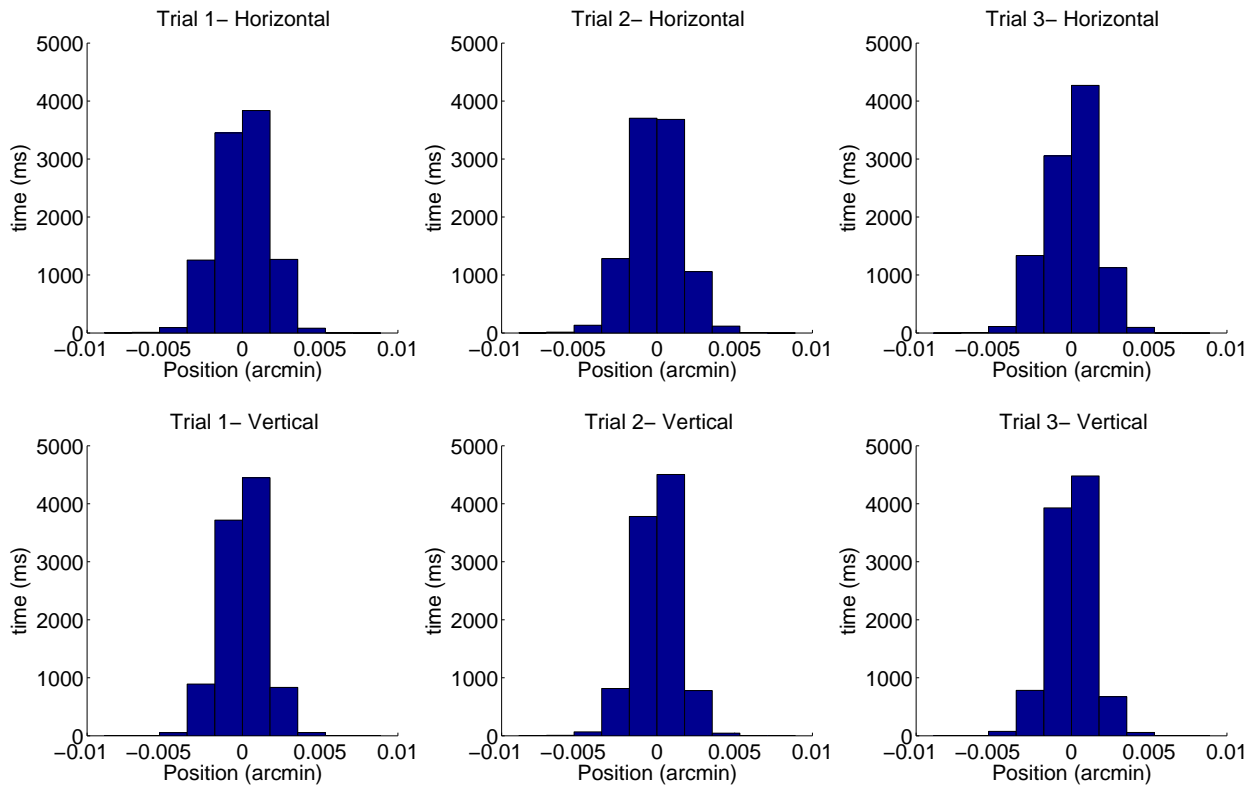


Figure 3: Distribution of the eye tracker output in horizontal (top) and vertical (bottom) axes. Each column refers to one trial.