

Artificial Eye Measurement Performed on 30-Apr-2014

Artificial eye measurements in three trials. The duration of each trial is 10 seconds.

	Trial 1	Trial 2	Trial 3
Mean_Hor	0.14157	0.14083	0.14053
Mean_Ver	0.05113	0.05243	0.05304
Std_Hor	0.00146	0.00153	0.00156
Std_Ver	0.00137	0.00110	0.00108

Figure 1: Mean and standard deviation in horizontal and vertical axis.

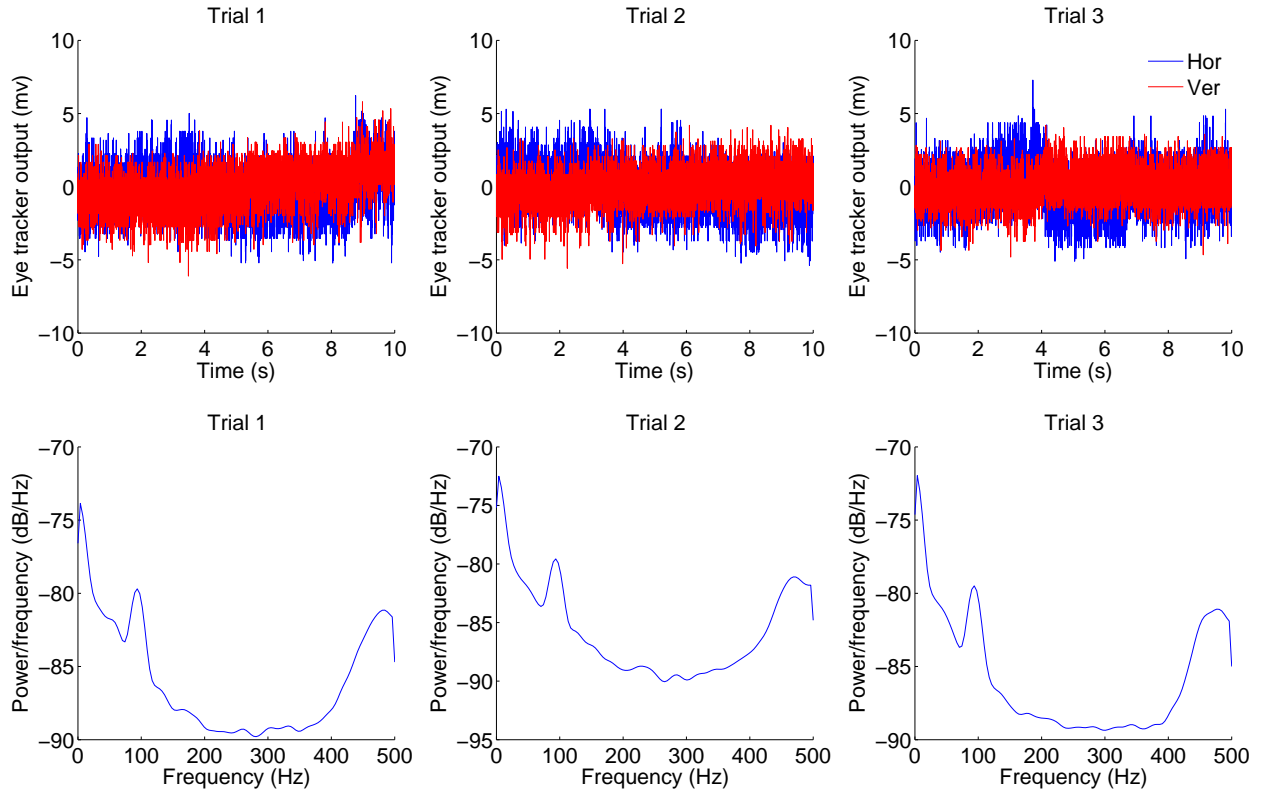


Figure 2: Top row represents the eye tracker output in horizontal and vertical axis for each trial. the bottom row are the PSD of the output calculated by Welch method. Each column refers to one trial.

Important note: The recording was done with the fan off.