

Drift Gain Experiment

Summary of Data in 10CPD condition

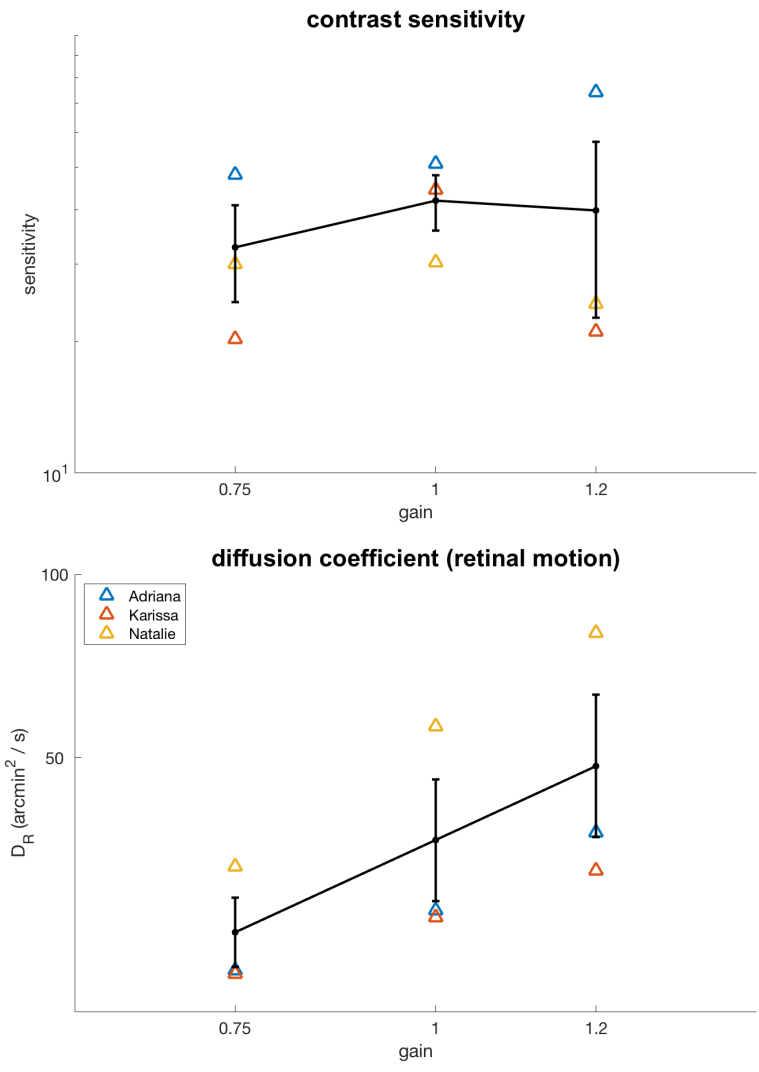
Janis Intoy

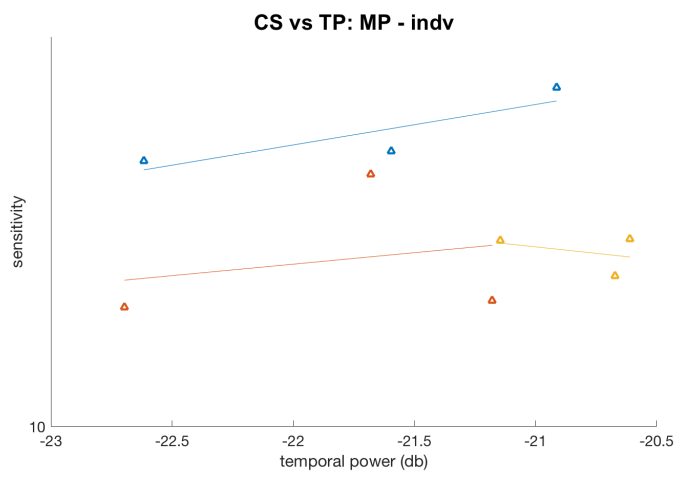
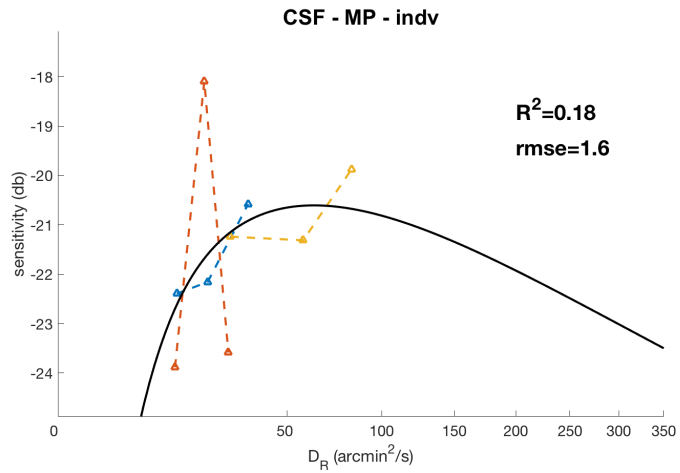
June 25, 2018

Contents

1	Summary Results	2
2	Data	4
2.1	Valid Trials	4
3	Behavioral Results	5
3.1	Contrast Threshold Estimation	5
3.2	Diffusion Constants	8

1 Summary Results





2 Data

2.1 Valid Trials

Only trials with drift only during stimulus presentation are kept for analysis. The second row for each subject is the number of trials near threshold. Classification of EM events were visually checked with obvious mistakes corrected.

Subject	Total	Drift Only Trials			Invalid		
		Gain = 0.75	Gain = 1.00	Gain = 1.20	ND/NT/B	S	MS
Adriana	1013	187	237	193	91	142	163
		155	174	139			
Karissa	1526	253	279	257	468	100	169
		107	101	104			
Natalie	1625	329	276	369	349	108	194
		128	94	115			

Table 1: Second row for each subject shows number of near-threshold trials (lenient boundary).

The data shown here are for three subjects with enough valid trials.

3 Behavioral Results

3.1 Contrast Threshold Estimation

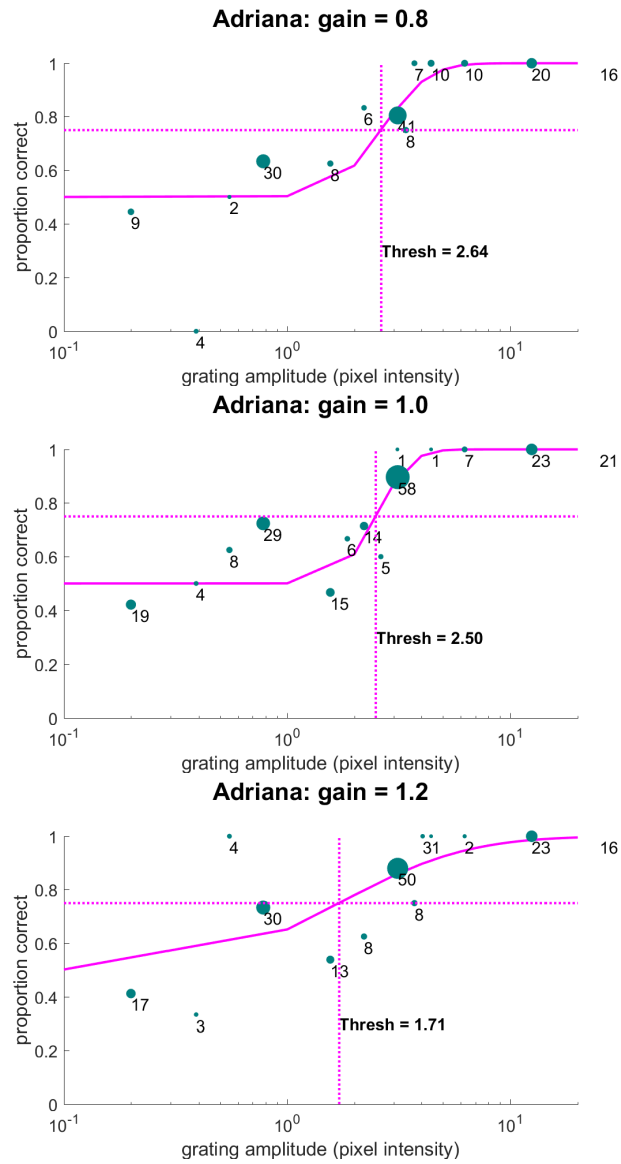


Figure 1: Adriana

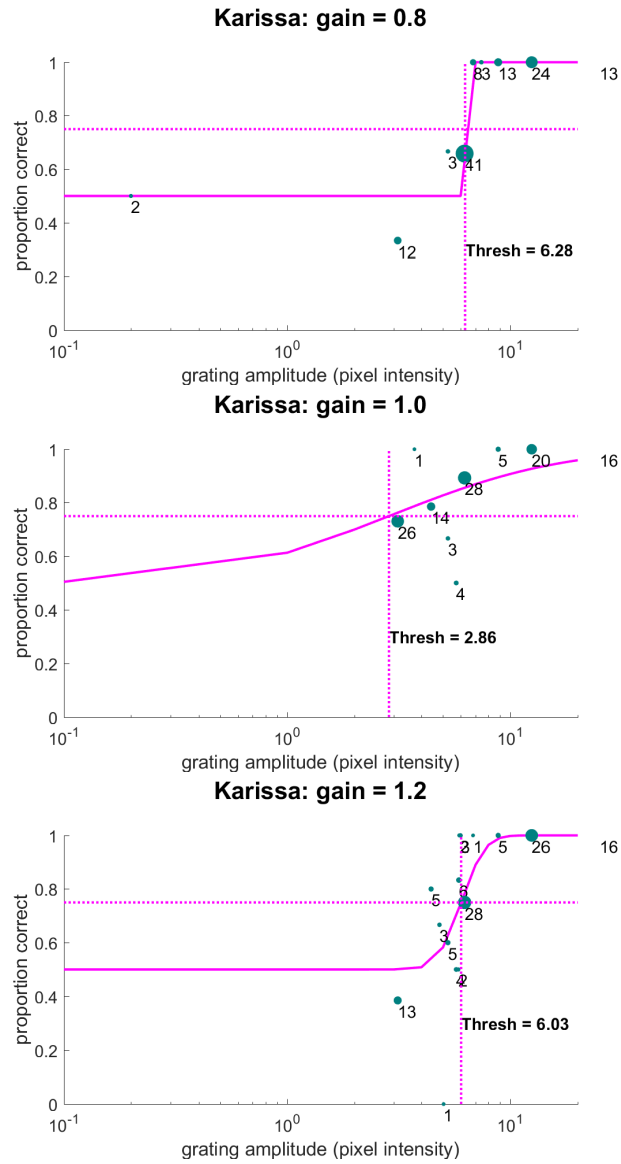


Figure 2: Karissa

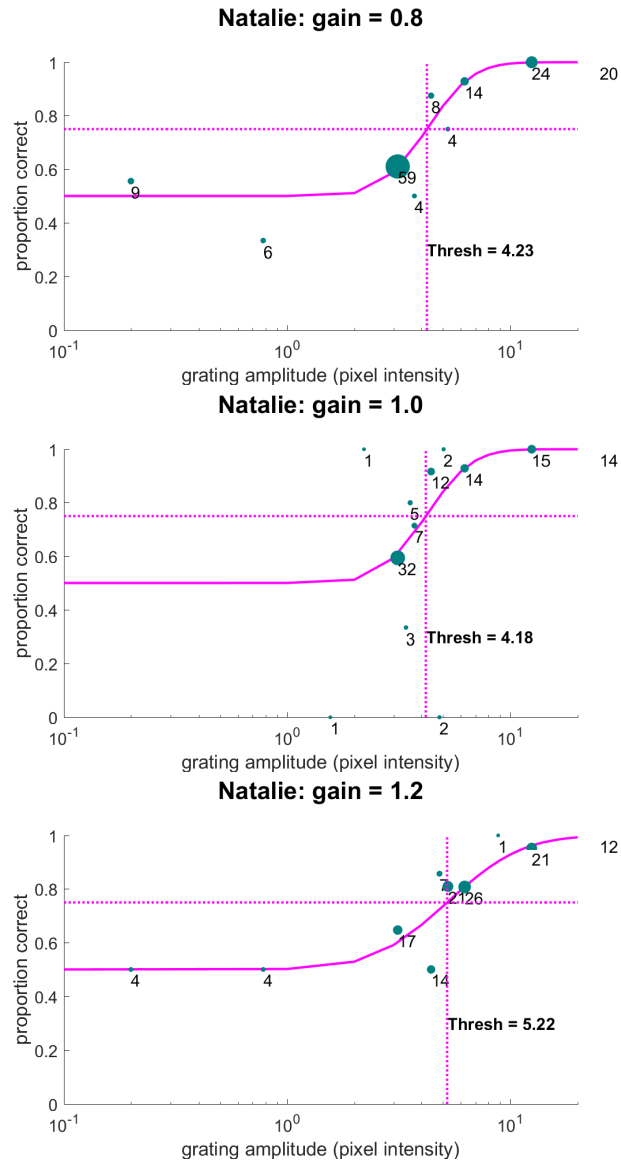


Figure 3: Natalie

3.2 Diffusion Constants

